

THE HEALTHY KIDS TIMES

Plant Parts We Eat

Grades 1-2

NUTRITION NEWS AND MORE FOR YOUR FAMILY

Dear Parent,

Your child has been learning more about vegetables. Vegetables are an important part of our diet. They supply the body with water, vitamins, and minerals such as potassium and calcium.

Vegetables are also a good source of fiber, which helps keep your digestive system healthy. Many vegetables are a good source of carbohydrates that supply energy for the body.

Easy to Grow Vegetables

Many vegetables grow well in Kansas. If you don't have room for a garden, or you don't have a yard, consider growing some vegetables in a container. Select a large container that has a hole in the bottom for water drainage. Fill the container with potting soil. Vegetables grow best in an area that receives at least 6 hours of direct sunshine each day. Here are some vegetables that can be grown in a container:

- Lettuce
- Spinach
- Radishes
- Peppers
- Tomatoes
- Herbs

Plant Parts We Eat

We eat many different parts of the plant. Some vegetables are the root of the plant, some are leaves, and others are the fruit of the plant. Foods that are seeds, like peas, corn and pinto beans, store energy for the plant. These foods tend to be higher in carbohydrates and calories. Foods that are leaves, like lettuce or spinach, are lower in calories.

How Much Do We Need?

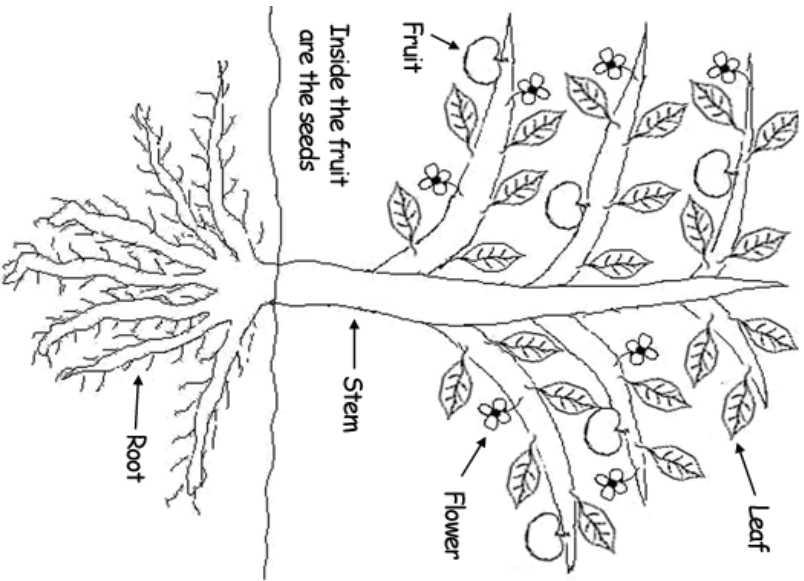
Children 2-3 years old need 1 cup of vegetables each day. Kids age 4-8 need 1½ cups of vegetables every day. Adults should eat about 3 cups of vegetables each day.



Ways to Eat More Vegetables

- * Add chopped broccoli to macaroni and cheese
- * Offer baked tortilla chips and salsa for a snack
- * Add extra vegetables to soups, stews and chili.

Parents and kids,
 We eat many different parts of plants. Some vegetables are the root of the plant. Some vegetables are plant leaves.
 Other vegetables are the stem, the flower, the seeds or the fruit of the plant.
 Circle the vegetables with the part of the plant they come from. We'll do the first one for you.



Broccoli	leaf	stem	root	flower	fruit	seed
Cauliflower	leaf	stem	root	flower	fruit	seed
Watermelon	leaf	stem	root	flower	fruit	seed
Lettuce	leaf	stem	root	flower	fruit	seed
Carrot	leaf	stem	root	flower	fruit	seed
Corn	leaf	stem	root	flower	fruit	seed
Asparagus	leaf	stem	root	flower	fruit	seed
Spinach	leaf	stem	root	flower	fruit	seed
Pumpkin	leaf	stem	root	flower	fruit	seed
Tomato	leaf	stem	root	flower	fruit	seed
Radish	leaf	stem	root	flower	fruit	seed

Here are the answers.
Leaf: Lettuce, Spinach. **Stem:** Asparagus. **Root:** Carrot, Radish. **Flower:** Broccoli, Cauliflower.
Fruit: Watermelon, Pumpkin, Tomato. **Seed:** Corn



Research and Extension

In accordance with Federal law and US Department of Agriculture's policy, this institution is prohibited from discriminating on the basis of race, color, national origin, sex, age, religion, political beliefs or disability. To file a complaint of discrimination, write USDA, Director of Civil Rights, Room 326-M, Whitten Building, 1400 Independence Avenue, SW, Washington, DC, 20250-9410 or call (202) 720-5964 (voice and TDD). USDA is an equal opportunity provider and employer.

This material was funded by USDA's Food Stamp Program through a contract awarded by the Kansas Department of Social and Rehabilitation Services. The Food Stamp Program provides nutrition assistance to people with low income. It can help you buy nutritious foods for a better diet. To find out more, contact your local SRS office or call (800)221-5689.