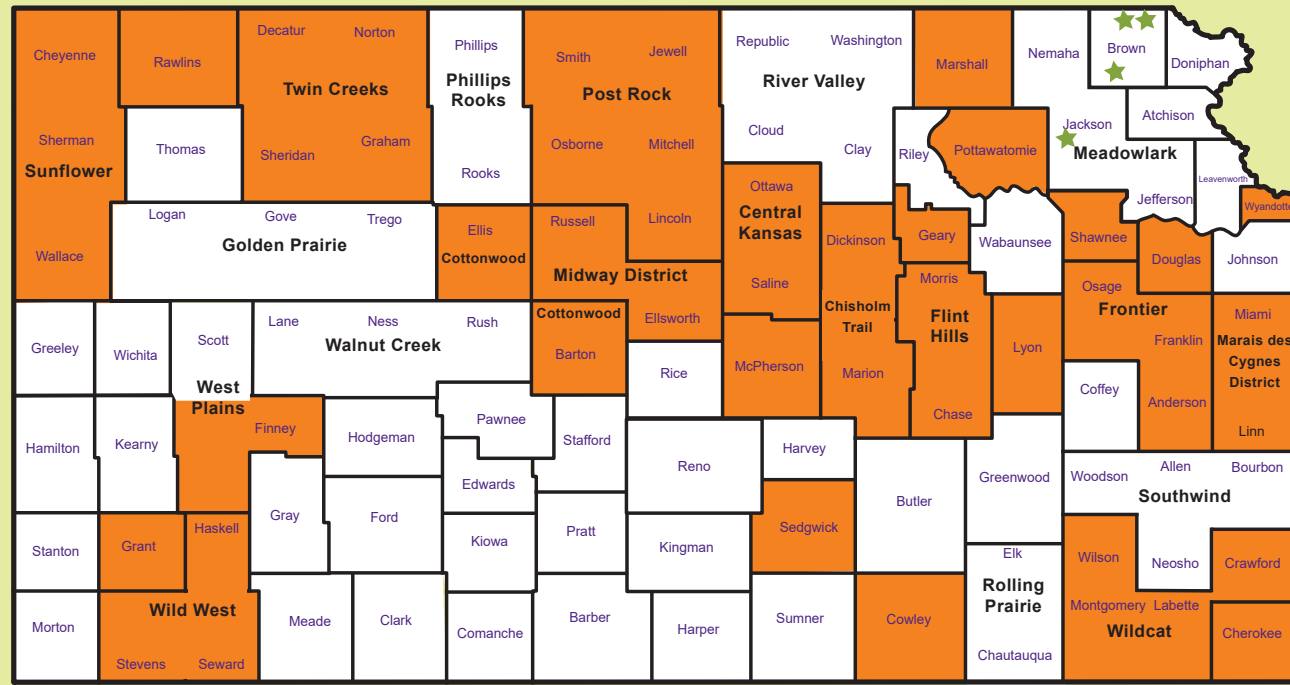


2022 Kansas SNAP-Ed Counties



★ Tribal Food System Project: Sac & Fox Nation of Missouri in Kansas and Nebraska, Iowa Tribe of Kansas and Nebraska, Kickapoo Tribe in Kansas, Prairie Band Potawatomi Nation



Contact Information
 Lisa Ross, MPH, RD, LD, Kansas SNAP-Ed Program Coordinator | lkross@ksu.edu

KANSAS SNAP-Ed Impact Report 2022

K-STATE
 Research and Extension



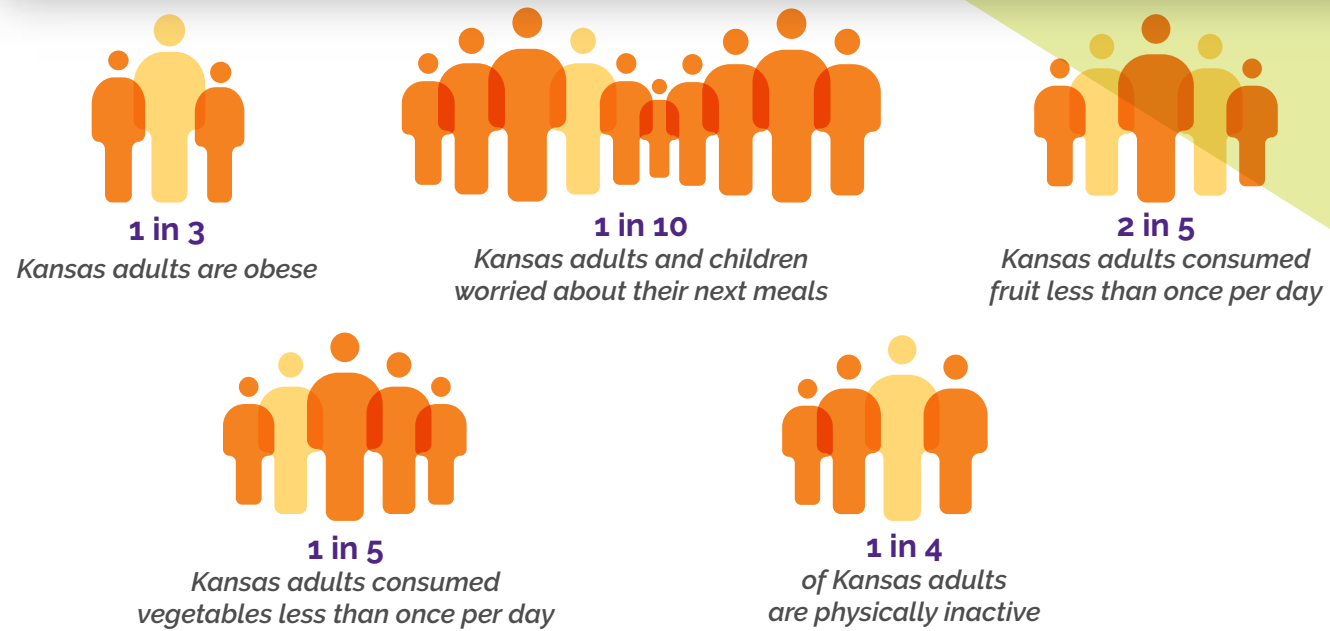
This institution is an equal opportunity provider.

Kansas SNAP-Education programming is coordinated and delivered by Kansas State Research and Extension in **57** counties and **4** Federally Recognized Tribes across Kansas. SNAP-Education provided direct nutrition education to youth, adults, and older adults and partnered with local agencies and organizations using multi-level intervention and community engagement to exert greater impacts among Kansans.

Over **8,200** Kansans were reached by SNAP-Education programs through multi-level intervention.

An average of **200,257** Kansans per month received SNAP benefits.

THE CHALLENGE



THE SOLUTION

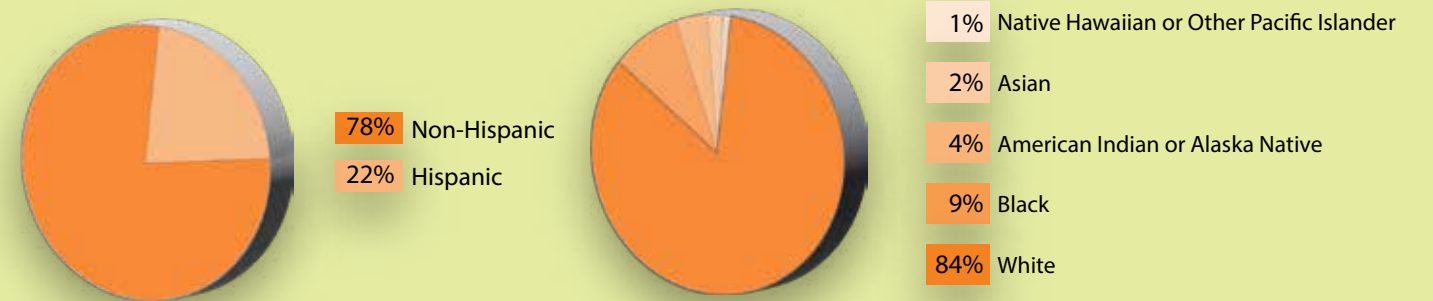
Empower low-income youth and adults to eat healthy foods and be physically active

Change policies, systems, and environments to make healthy choices easier and more desirable

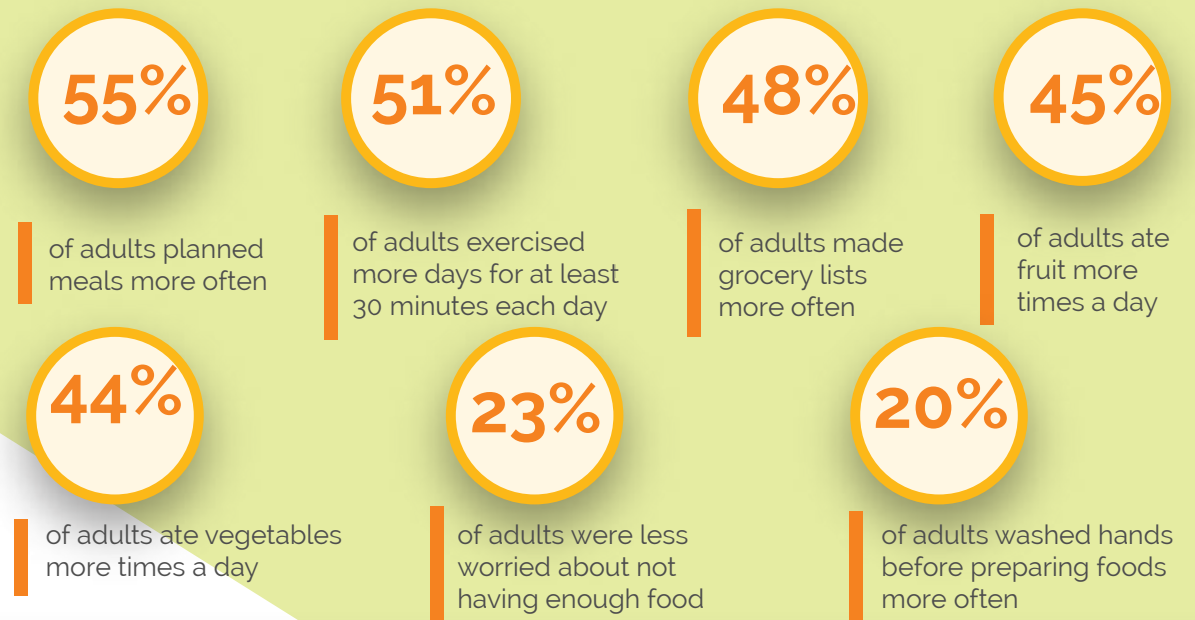
Collaborate with community partners and coalitions to create a culture of health

THE OUTCOMES

SNAP-Education supports Kansans with limited resources to make healthy food choices and become physically active by providing a series of direct education lessons, reaching over **4,500 Kansans**.



After participating in the Kansas SNAP-Education Program, participants of all ages made behavioral changes to improve their health.



COMMUNITY PROJECTS

Maintained edible gardens
Reached 50 people

Community Gardens
11 sites

Improved food donation standards
Improved layout to encourage healthy selections
Reached Over 490 people

Food Pantries/Banks
9 sites

Expanded use of SNAP/EBT
Implemented Double Up Food Bucks
Reached Over 900 people

Farmers Markets
7 sites